

# PLANS FOR

# WAYFINDING SIGNAGE PROJECT

HOP APPLICATION NO. 241454

BOROUGH OF MEDIA  
DELAWARE COUNTY, PENNSYLVANIA

## UTILITY OWNERS

AQUA PENNSYLVANIA  
765 W. LANCASTER AVENUE  
BIRN MAR, PA 19001  
ATTN: ALAN ROTH

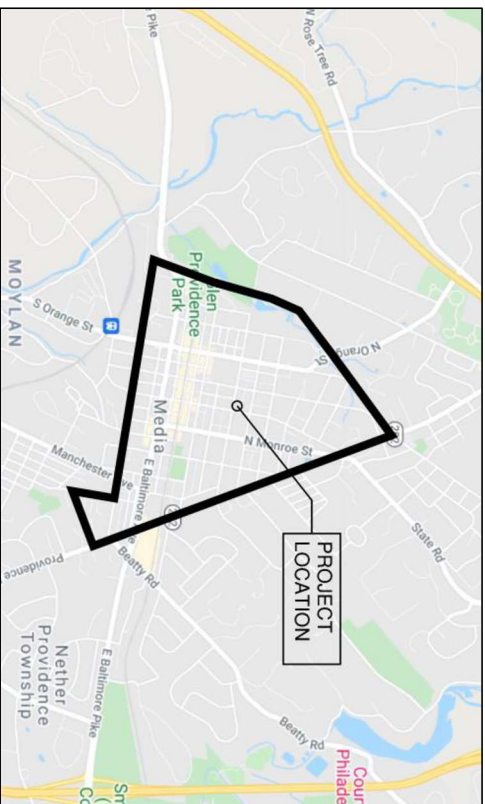
VERIZON PENNSYLVANIA  
900 KACE STREET, 6TH FLOOR  
PHILADELPHIA, PA 19107  
ATTN: SUZETTE WALSH  
SUZETTE.WALSH@VERIZON.COM

COMCAST CABLE COMMUNICATIONS, INC.  
1400 LO ROAD  
DOWNINGTOWN, PA 19342  
ATTN: TOM DIERICKY  
866-728-8880

COMCAST CABLE  
1004 CORNHURST BLVD  
DOWNINGTOWN, PA 19335  
ATTN: LEE MCCABERTY  
MCCABERTY@CABLE.COMCAST.COM

PECO ENERGY  
C/O STS LLC  
1004 W 8TH AVENUE  
KING OF PRUSSIA, PA 19406  
ATTN: WAYNE VINCENT  
WAYNE.VINCENT@PECO.NET

BOROUGH OF MEDIA  
301 N JACKSON STREET  
MEDIA, PA 19063  
(610) 586-5240



LIGHTHOUSE  
ENGINEERING, LLC

LIGHTHOUSE ENGINEERING, LLC  
1006 FIRST AVENUE  
MEDIA BOROUGH, PA 19063  
KMATSON@LIGHTHOUSE-ENGINEERS.COM

WAYFINDING SIGNAGE PROJECT  
MEDIA BOROUGH  
301 N. JACKSON STREET  
MEDIA BOROUGH, DELAWARE COUNTY

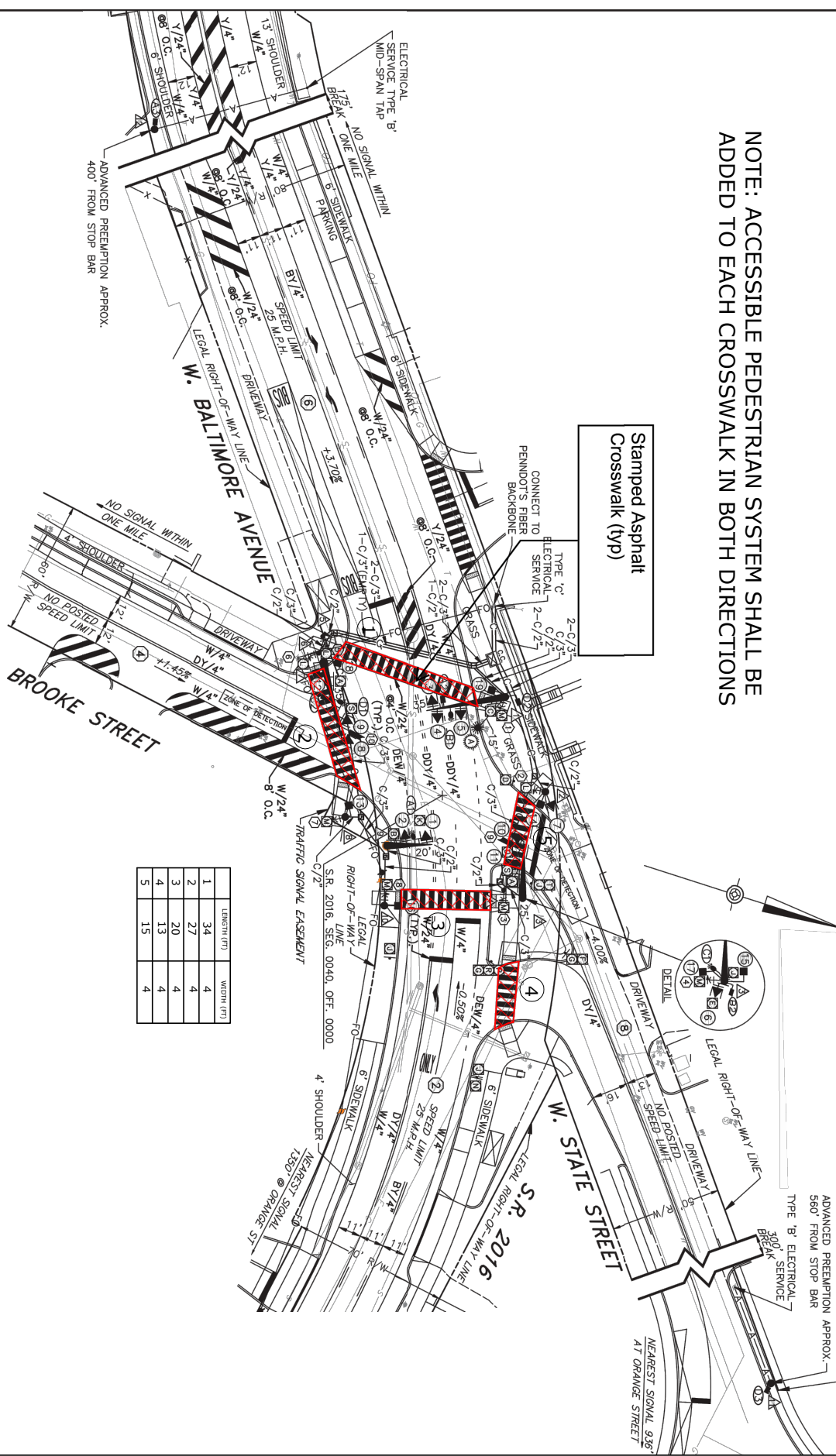
REV. 7:  
REV. 6:  
REV. 5:  
REV. 4:  
REV. 3:  
REV. 2:  
REV. 1:  
ORIG. DATE 08/16/2021

SHEET

1

OF 11

NOTE: ACCESSIBLE PEDESTRIAN SYSTEM SHALL BE ADDED TO EACH CROSSWALK IN BOTH DIRECTIONS



REV. 7:	
REV. 6:	
REV. 5:	
REV. 4:	
REV. 3:	
REV. 2:	
REV. 1:	
ORIG. DATE	08/16/2021

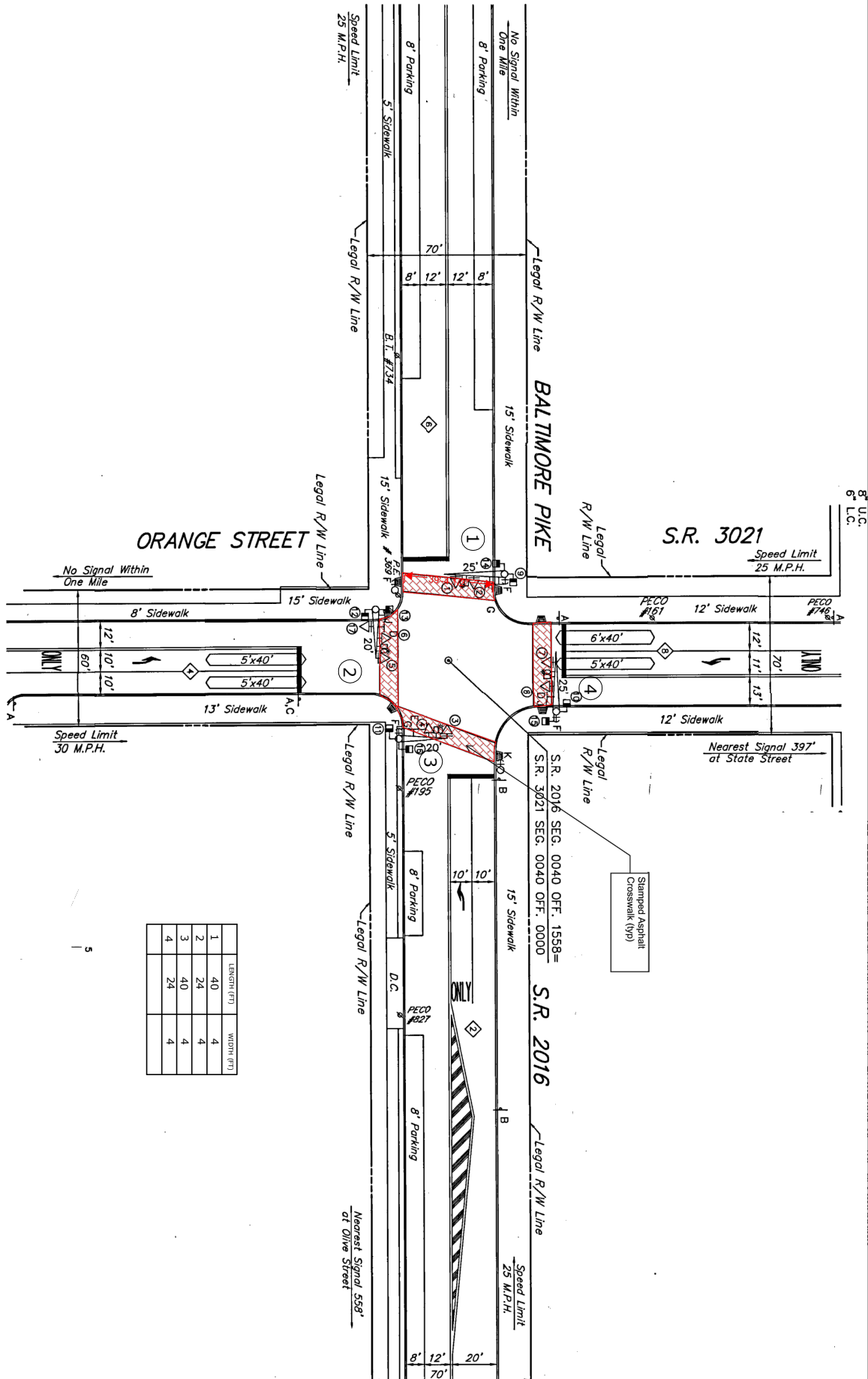
WAYFINDING SIGNAGE PROJECT	
MEDIA BOROUGH	
301 N. JACKSON STREET	
MEDIA BOROUGH, DELAWARE COUNTY	

Lighthouse Engineering, LLC	
1006 FIRST AVENUE	
MEDIA BOROUGH, PA 19063	
KMATSON@LIGHHOUSE-ENGINEERS.COM	

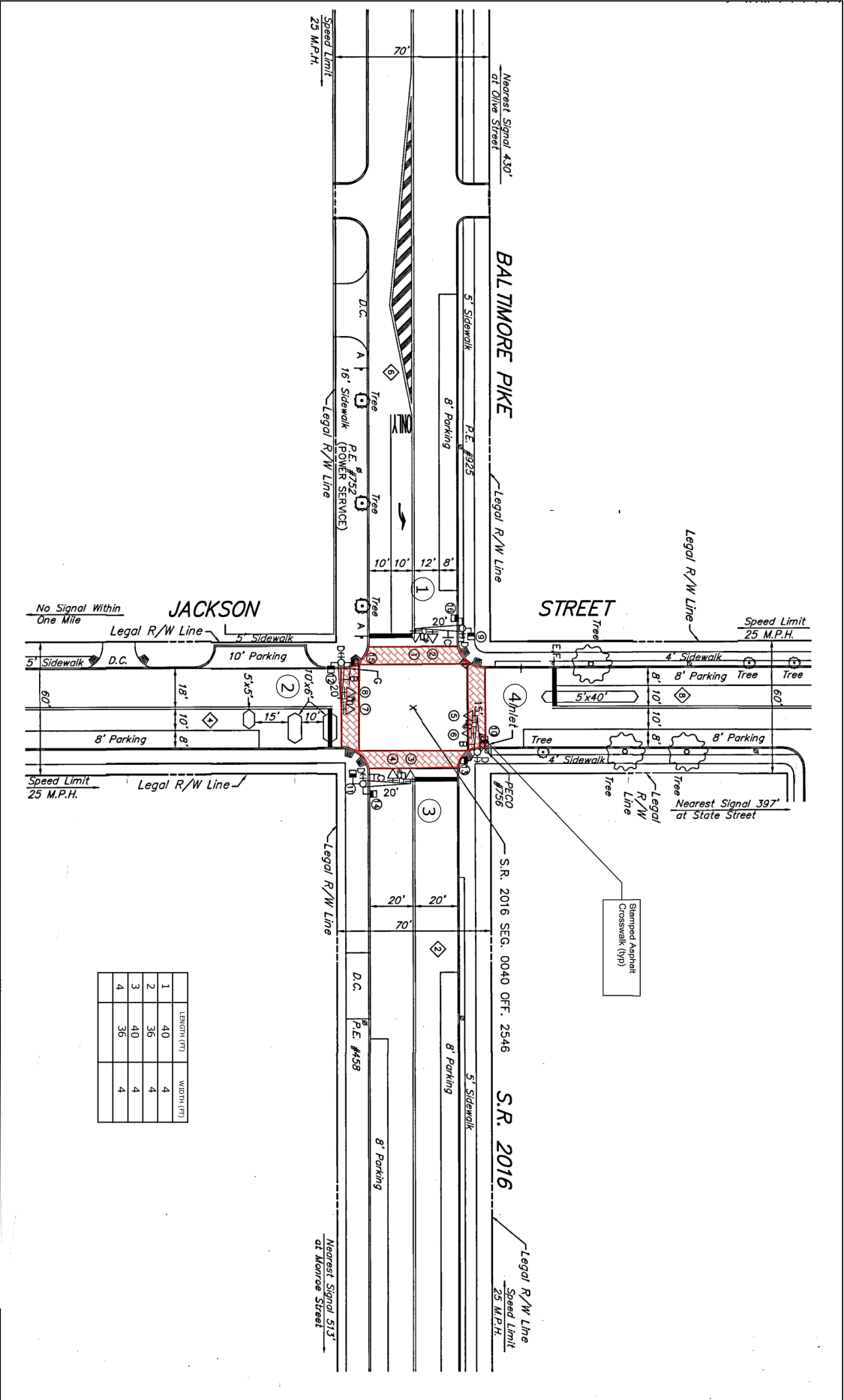
Lighthouse Engineering, LLC	
	



NOTE: ACCESSIBLE PEDESTRIAN SYSTEM SHALL BE ADDED TO EACH CROSSWALK IN BOTH DIRECTIONS



NOTE: ACCESSIBLE PEDESTRIAN SYSTEM SHALL BE ADDED TO EACH CROSSWALK IN BOTH DIRECTIONS



LIGHTHOUSE ENGINEERING, LLC  
1006 FIRST AVENUE  
MEDIA BOROUGH, PA 19063  
KMATSON@LIGHTHOUSE-ENGINEERS.COM

WAYFINDING SIGNAGE PROJECT  
MEDIA BOROUGH  
301 N. JACKSON STREET  
MEDIA BOROUGH, DELAWARE COUNTY

REV. 7:  
REV. 6:  
REV. 5:  
REV. 4:  
REV. 3:  
REV. 2:  
REV. 1:  
ORIG. DATE 08/16/2021



ENGINEERING, LLC



**KMATSON@LIGHTHOUSE-ENGINEERS.COM**

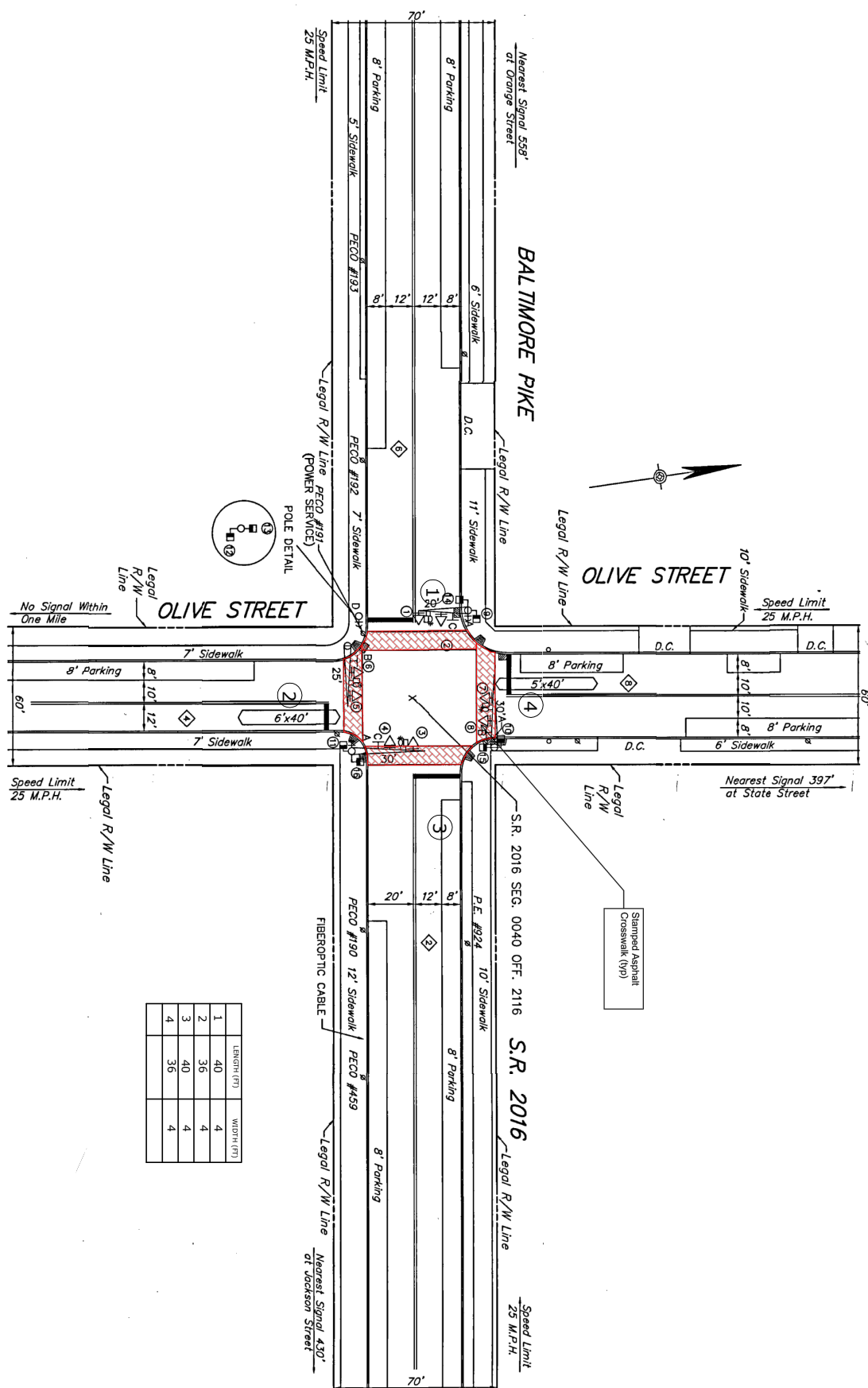
**MEDIA BOROUGH  
301 N. JACKSON STREET  
MEDIA BOROUGH, DELAWARE COUNTY**

REV. 7:
REV. 6:
REV. 5:
REV. 4:
REV. 3:
REV. 2:
REV. 1:
ORIG. DATE 08/16/2021

SHEET

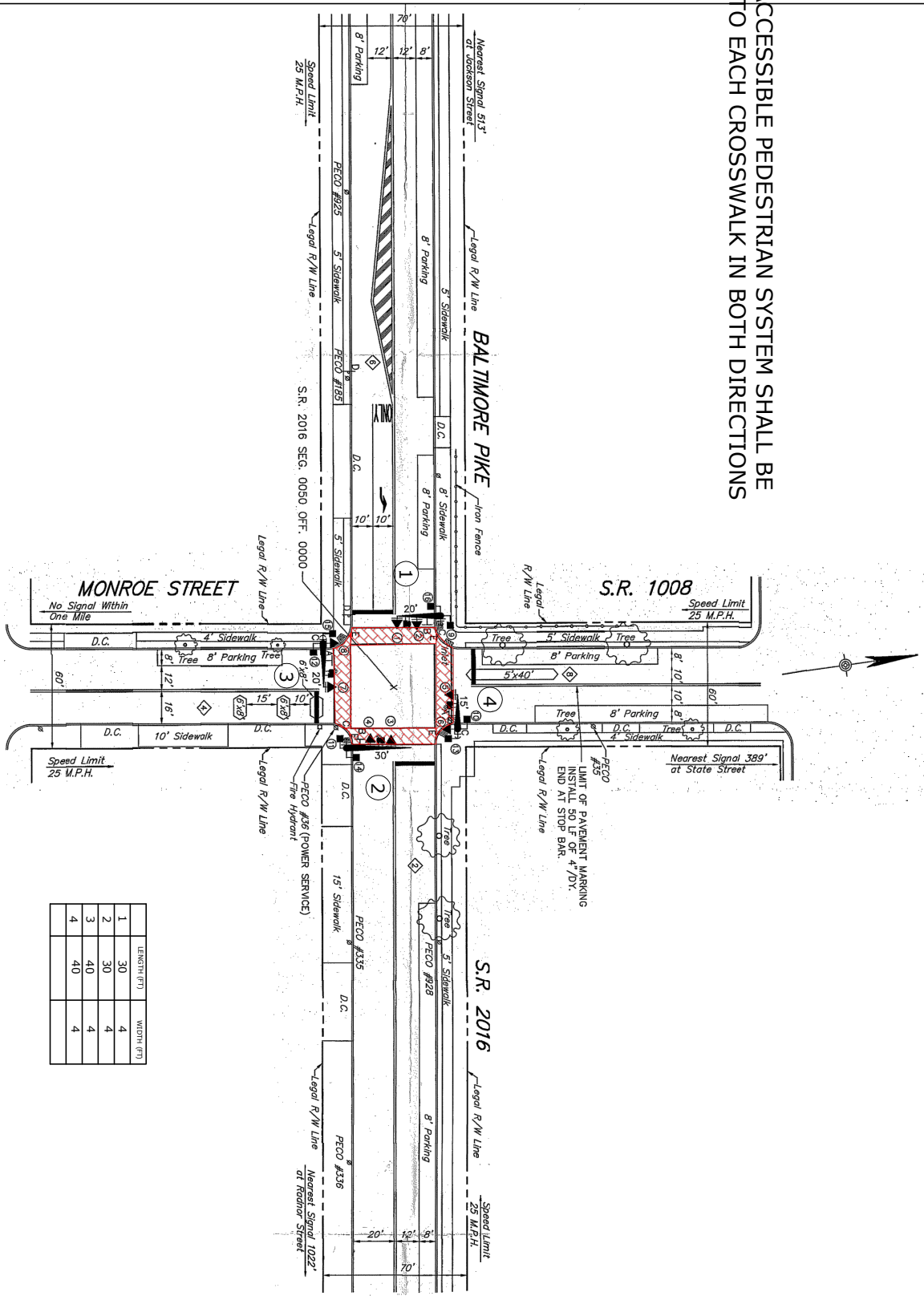
5

OF 11



	LENGTH (FT)	WIDTH (FT)
1	40	4
2	36	4
3	40	4
4	36	4

NOTE: ACCESSIBLE PEDESTRIAN SYSTEM SHALL BE ADDED TO EACH CROSSWALK IN BOTH DIRECTIONS



	LENGTH (FT)	WIDTH (FT)
1	30	4
2	30	4
3	40	4
4	40	4

REV. 7:	
REV. 6:	
REV. 5:	
REV. 4:	
REV. 3:	
REV. 2:	
REV. 1:	
ORIG. DATE	08/16/2021

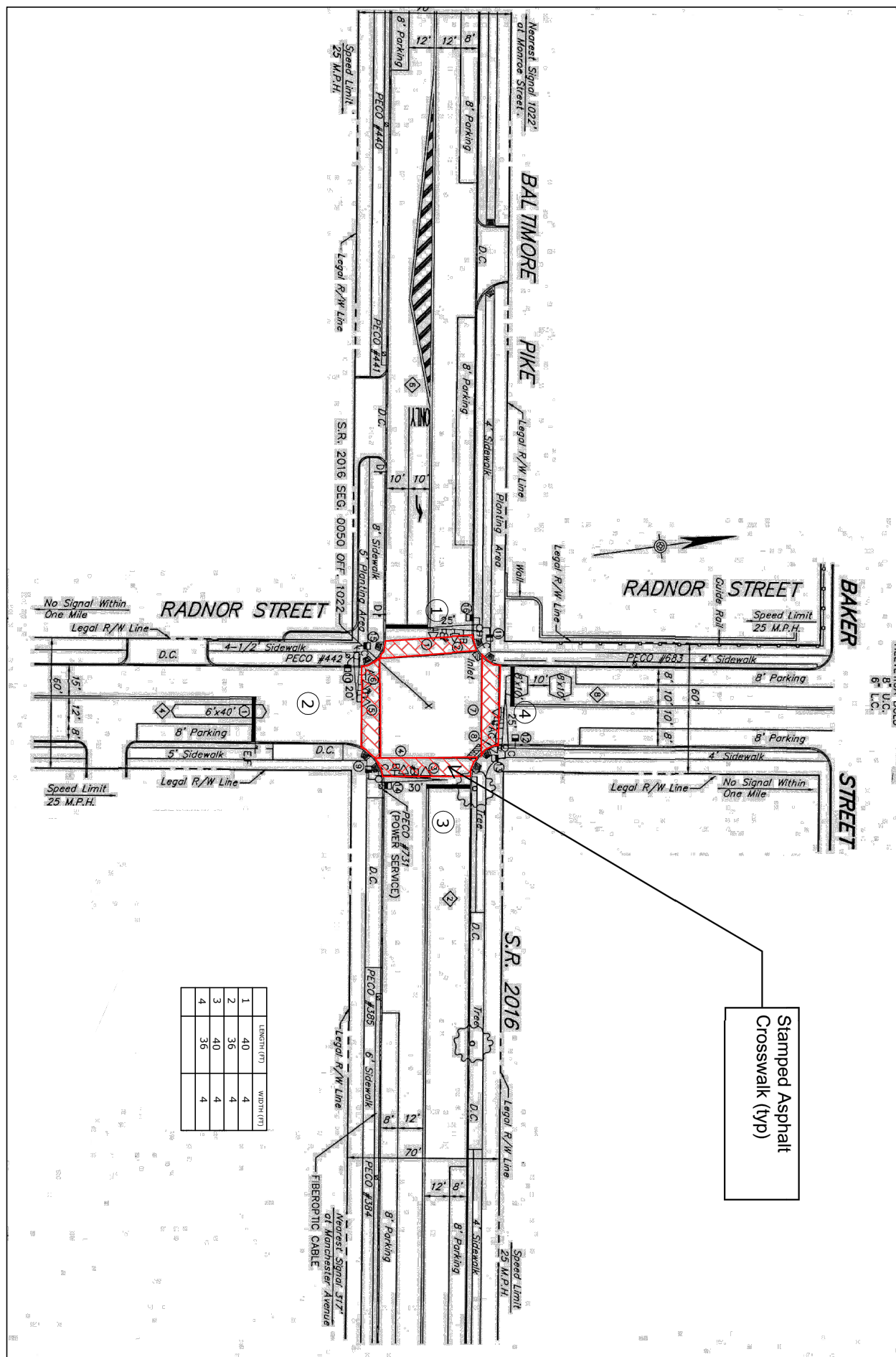
**WAYFINDING SIGNAGE PROJECT**  
 MEDIA BOROUGH  
 301 N. JACKSON STREET  
 MEDIA BOROUGH, DELAWARE COUNTY

**LIGHTHOUSE ENGINEERING, LLC**  
 1006 FIRST AVENUE  
 MEDIA BOROUGH, PA 19063  
 KMATSON@LIGHTHOUSE-ENGINEERS.COM

**LIGHTHOUSE**  
  
 ENGINEERING, LLC

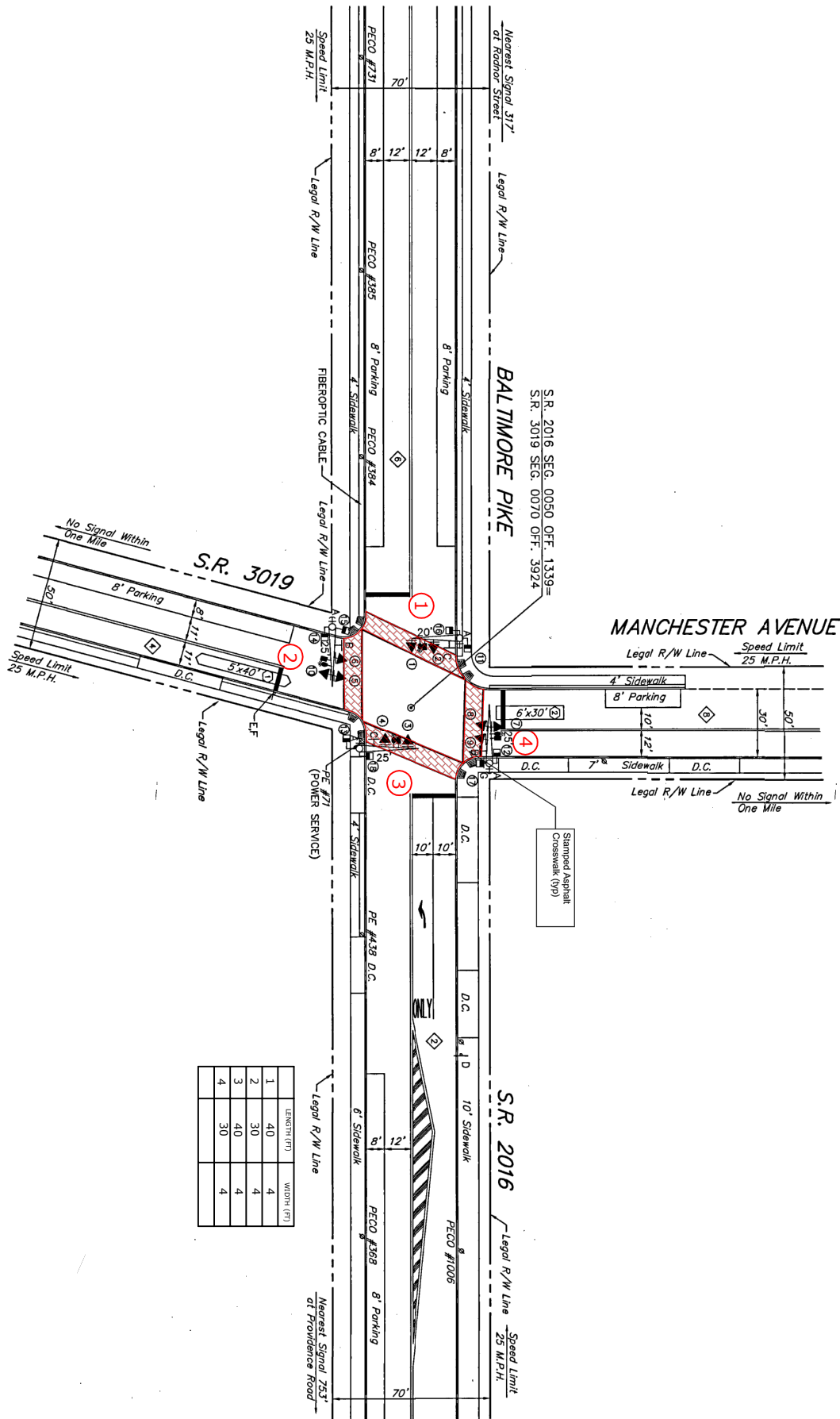


NOTE: ACCESSIBLE PEDESTRIAN SYSTEM SHALL BE  
ADDED TO EACH CROSSWALK IN BOTH DIRECTIONS



Stamped Asphalt  
Crosswalk (typ)

NOTE: ACCESSIBLE PEDESTRIAN SYSTEM SHALL BE ADDED TO EACH CROSSWALK IN BOTH DIRECTIONS

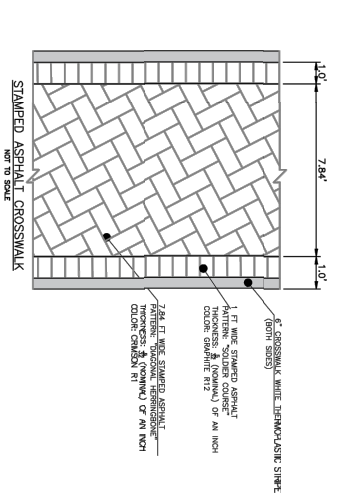
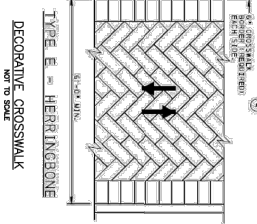




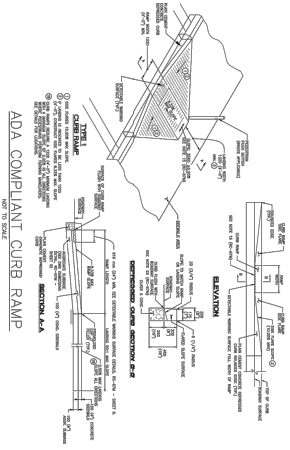
	LENGTH (FT)	WIDTH (FT)
1	40	4
2	36	4
3	10	4
4	56	4
5	40	4



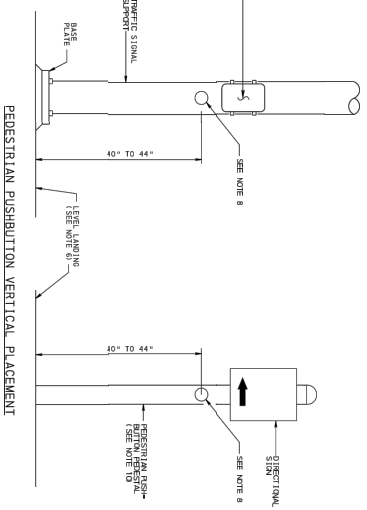
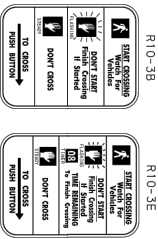
# DECORATIVE CROSSWALK



NOTES:  
1. MANUFACTURED BY PATENT RIGHTS INC. OR APPROVED EQUAL.  
2. TO BE INSTALLED BY A CERTIFIED INSTALLER WORKING FOR PATENT RIGHTS INC. OR APPROVED EQUAL.  
3. CROSSWALK COLORED IN ACCORDANCE WITH REGULATION 111.  
4. CONTRACTOR TO OBTAIN SHOP DRAWING APPROVAL BEFORE ORDERING MATERIALS.



ADA COMPLIANT CURB RAMP



PEDESTRIAN PUSHBUTTON VERTICAL PLACEMENT

## GENERAL PERMIT NOTES PUBLICATION 282 APPENDIX C2.

1. THE EXISTING SPEED LIMIT ON S.R. 2016 IS 25 M.P.H.
2. THE RIGHT-OF-WAY IS FREE ACCESS.
3. ALL WORK IN PA STATE HIGHWAY RIGHT-OF-WAY IS TO BE PERFORMED IN ACCORDANCE WITH THE PENNSYLVANIA DEPARTMENT OF TRANSPORTATION'S (DOT) STANDARD SPECIFICATIONS FOR CONSTRUCTION.
4. PENNDOT PUBLICATION 134, DESIGN MANUAL, PART 2 - HIGHWAY DESIGN.
5. PENNDOT PUBLICATION 35, APPROVED AGGREGATE PRODUCERS (BULLETIN 14).
6. PENNDOT PUBLICATION 42, PRODUCERS OF READY-MIX CONCRETE (BULLETIN 42).
7. PENNDOT PUBLICATION 46, TRAFFIC ENGINEERING MANUAL.
8. PENNDOT PUBLICATION 124, STANDARDS FOR ROADWAY CONSTRUCTION.
9. PENNDOT PUBLICATION 212, OFFICIAL TRAFFIC CONTROL DEVICES.
10. PENNDOT PUBLICATION 213, TEMPORARY TRAFFIC CONTROL GUIDELINES.
11. PENNDOT PUBLICATION 408, SPECIFICATIONS.
12. PERMITTEE IS RESPONSIBLE FOR MAINTENANCE OF ALL AUTHORIZED STRUCTURES, FACILITIES AND DRAINAGE.
13. PERMITTEE IS RESPONSIBLE FOR MAINTENANCE OF ALL AUTHORIZED SIGNS AND PAVEMENT MARKINGS.
14. CONTACT PENNSYLVANIA ONE-CALL (1-800-242-1776) THREE WORKING DAYS BEFORE EXCAVATION OR DEMOLITION WORK.
15. IF A TRAFFIC SIGNAL IS WITHIN 500 FEET OF THE SITE, CALL THE DISTRICT TRAFFIC ENGINEER AT (610) 209-6550 AT LEAST 3 DAYS PRIOR TO THE START OF WORK.
16. THIS PERMIT MAY BE RESTRICTED ON WORKING HOURS AND TIMES FOR HOLIDAYS, WEEKENDS, AND SPECIAL OR UNFORESEEN EVENTS AND WILL REQUIRE APPROVAL FROM THE COUNTY OFFICE PRIOR TO WORKING DURING THESE PERIODS.
17. FINAL APPROVAL OF THE PROPOSED SWAYOUT LOCATION WILL BE AT THE DISCRETION OF THE INSPECTOR-IN-CHARGE AND WILL BE CONFIRMED AT THE PRE-CONSTRUCTION MEETING.
18. PRIOR TO ANY OVERLAY, BITUMINOUS OR CONCRETE BASE REPAIR OR JOINT REPLACEMENT MAY BE REQUIRED. REPAIR/REPLACEMENT WILL BE AT THE DISCRETION OF THE INSPECTOR-IN-CHARGE.
19. ALL EXISTING PAVEMENT MARKINGS WHICH ARE NO LONGER APPROPRIATE SHALL BE REMOVED OR REPAIRED. THE PERMITTEE SHALL PLACE ALL REQUIRED NEW PAVEMENT MARKINGS.
20. ALL PAVEMENT MARKINGS INCLUDING LONGITUDINAL LINES TO BE HOT THERMOPLASTIC (PENNDOT PUBLICATION 111, 10-5800).
21. MATCH EXISTING PAVEMENT MARKINGS AT THE LIMITS OF WORK.
22. MATERIAL CERTIFICATION MUST BE PROVIDED BY AN APPROVED MANUFACTURER LISTED IN THE DEPARTMENT'S PUBLICATION 35 (BULLETIN 15), FOR ALL MATERIALS AND STRUCTURES WITHIN PENNDOT RIGHT-OF-WAY.
23. ALL PROPOSED PEDESTRIAN FACILITIES REFLECTED ON THESE PLANS, INCLUDING THOSE THAT ARE OUTSIDE OF PENNDOT LEGAL RIGHT-OF-WAY, SHALL BE CONSTRUCTED TO COMPLY WITH THE REQUIREMENTS OF THE U.S. ACCESS BOARD, PUBLIC RIGHT-OF-WAY ACCESSIBILITY GUIDELINES (PROXIMO) OF THE ACCESSIBILITY GUIDELINES FOR PEDESTRIANS (PROXIMO) OF THE U.S. ACCESS BOARD, CHAPTER 2, CHAPTER 6, AND PENNDOT STANDARDS FOR ROADWAY CONSTRUCTION (PENNDOT PUBLICATION 724, RC-67N) PROVIDE GUIDANCE ON ADA ACCESSIBLE DESIGN FOR PEDESTRIAN FACILITIES AND CAN BE UTILIZED FOR REFERENCE.
24. ALL SLOPE MEASUREMENTS WILL BE INSPECTED/VERIFIED WITH A 2-FOOT SMART LEVEL.
25. IT IS THE RESPONSIBILITY OF THE PERMITTEE TO REMOVE ANY DEBRIS AND FLUSH OUT ALL EXISTING AND NEW DRAINAGE FACILITIES WITHIN THE PROJECT LIMITS AT THE COMPLETION OF THE CONSTRUCTION.
26. A LIST OF PUBLIC UTILITIES HAS BEEN INCLUDED ON THE COVER SHEET OF THIS PLAN SET.
27. THE PERMITTEE IS RESPONSIBLE FOR THE COORDINATION OF RELOCATING ANY CONFLICTING UTILITIES WHICH ARE A RESULT OF THESE IMPROVEMENTS.
28. THE LEGAL RIGHT OF WAY FOR BALTIMORE AVENUE IS SHOWN FROM DEEDS OF RECORD.



LIGHTHOUSE ENGINEERING, LLC  
1006 FIRST AVENUE  
MEDIA BOROUGH, PA 19063  
KMATSON@LIGHTHOUSE-ENGINEERS.COM

WAYFINDING SIGNAGE PROJECT  
MEDIA BOROUGH  
301 N. JACKSON STREET  
MEDIA BOROUGH, DELAWARE COUNTY

REV. 7: 08/16/2021  
REV. 6: 08/16/2021  
REV. 5: 08/16/2021  
REV. 4: 08/16/2021  
REV. 3: 08/16/2021  
REV. 2: 08/16/2021  
REV. 1: 08/16/2021  
ORIG. DATE 08/16/2021



2. The *in situ* copy of the 300-bp fragment of the *ori* sequence is inserted into the *ori* of *Y. enterocolitica* strain 4080, which is a *Y. enterocolitica* strain that has been found to be resistant to tetracycline and streptomycin. The *ori* of *Y. enterocolitica* strain 4080 is a 1.5-kb fragment from the *ori* of the *ori* of *Y. enterocolitica* strain 4080.



Distance and Squaring Quick Reference Chart

Case No.	Age	Sex	Height (cm)	Weight (kg)	BMI (kg/m <sup>2</sup> )	Waist (cm)	Hip (cm)	Waist:Hip	Neck (cm)	Blood Pressure (mmHg)	Fasting Glucose (mg/dL)	Fasting Insulin (μU/mL)	HbA1c (%)	C-peptide (ng/mL)	Hemoglobin Analysis		HbA1c (%)
															Hb (%)	HbA1c (%)	
1	20	M	170	65	38.2	95	105	0.90	35	120/80	100	15	6.5	0.5	12.5	12.5	6.5
2	22	F	160	55	34.4	90	100	0.90	30	110/70	95	12	6.0	0.4	11.5	11.5	6.0
3	25	M	180	80	24.7	100	110	0.91	38	130/90	120	18	7.0	0.6	12.5	12.5	7.0
4	28	F	155	45	29.7	85	95	0.89	28	105/65	85	10	5.5	0.3	11.0	11.0	5.5
5	30	M	175	70	22.3	95	105	0.90	32	125/85	105	14	6.2	0.5	12.0	12.0	6.2
6	32	F	165	60	36.4	95	105	0.90	32	115/75	95	12	5.8	0.4	11.5	11.5	5.8
7	35	M	185	90	26.2	105	115	0.91	40	135/95	125	20	7.5	0.7	13.0	13.0	7.5
8	38	F	150	40	35.6	80	90	0.89	25	100/60	80	10	5.2	0.3	10.5	10.5	5.2
9	40	M	170	65	38.2	95	105	0.90	35	120/80	100	15	6.5	0.5	12.5	12.5	6.5
10	42	F	160	55	34.4	90	100	0.90	30	110/70	95	12	6.0	0.4	11.5	11.5	6.0
11	45	M	180	80	24.7	100	110	0.91	38	130/90	120	18	7.0	0.6	12.5	12.5	7.0
12	48	F	155	45	29.7	85	95	0.89	28	105/65	85	10	5.5	0.3	11.0	11.0	5.5
13	50	M	175	70	22.3	95	105	0.90	32	125/85	105	14	6.2	0.5	12.0	12.0	6.2
14	52	F	165	60	36.4	95	105	0.90	32	115/75	95	12	5.8	0.4	11.5	11.5	5.8
15	55	M	185	90	26.2	105	115	0.91	40	135/95	125	20	7.5	0.7	13.0	13.0	7.5
16	58	F	150	40	35.6	80	90	0.89	25	100/60	80	10	5.2	0.3	10.5	10.5	5.2
17	60	M	170	65	38.2	95	105	0.90	35	120/80	100	15	6.5	0.5	12.5	12.5	6.5
18	62	F	160	55	34.4	90	100	0.90	30	110/70	95	12	6.0	0.4	11.5	11.5	6.0
19	65	M	180	80	24.7	100	110	0.91	38	130/90	120	18	7.0	0.6	12.5	12.5	7.0
20	68	F	155	45	29.7	85	95	0.89	28	105/65	85	10	5.5	0.3	11.0	11.0	5.5
21	70	M	175	70	22.3	95	105	0.90	32	125/85	105	14	6.2	0.5	12.0	12.0	6.2
22	72	F	165	60	36.4	95	105	0.90	32	115/75	95	12	5.8	0.4	11.5	11.5	5.8
23	75	M	185	90	26.2	105	115	0.91	40	135/95	125	20	7.5	0.7	13.0	13.0	7.5</

**a)** The following information is available from the company's records:

	Year ended 30 June 2019	Year ended 30 June 2018
Sales revenue	\$6,700,000	\$6,200,000
Cost of sales	(2,500,000)	(2,300,000)
Gross profit	4,200,000	3,900,000
Operating expenses	(1,800,000)	(1,700,000)
Operating profit	2,400,000	2,200,000
Finance income	100,000	150,000
Finance costs	(50,000)	(100,000)
Profit before tax	2,450,000	2,250,000
Tax expense	(612,500)	(562,500)
Profit after tax	1,837,500	1,687,500

**b)** All other relevant disclosures may be estimated or calculated where appropriate.

[illegible][illegible]

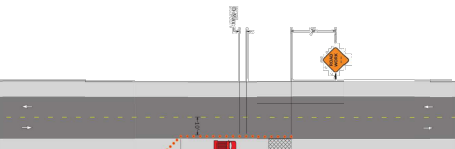
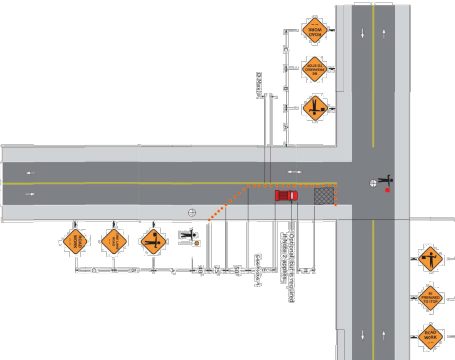
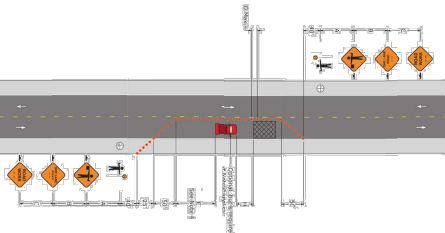
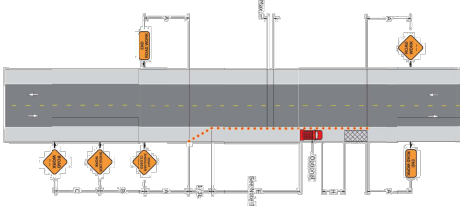
Distance and Spacing Quick Reference Chart

[illegible]

**Figure 1**



Distance	Speed	W	L	1/2L	1/3L	Sgn. Channeling Devices (see Table Two) (feet)	C
A							
B							
C							
D							

[illegible]

01. INSTALL, MAINTAIN AND REMOVE ALL TRAFFIC CONTROL DEVICES AS SPECIFIED IN THE TRAFFIC CONTROL PLANS.  
02. ALL MAINTENANCE AND PROTECTION OF TRAFFIC DEVICES AND METHODS SHALL CONFORM WITH THE FOLLOWING DOCUMENTS:  
COMMONWEALTH OF PENNSYLVANIA, DEPARTMENT OF TRANSPORTATION SPECIFICATIONS, PUBLICATION 408, 2011, OR AS AMENDED  
WHICH STATE TRAFFIC CONTROL DEVICES, SUBDIVISION 612.22.10000.0000 (03.01) 0000 (04.0000) 0000

- [illegible]

[illegible]

- [illegible]

[illegible][illegible]

**SAFETY BUILD-UP MUST BE USED ANY PLACE WHERE OPEN EXCAVATION ALONG ACTIVE**

ROOMWAYS RESULTS IN A DROP-OFF GREATER THAN 2".  
A TEMPORARY 4" WHITE EDGE LINE SHALL BE PROVIDED IF THE EXISTING EDGE LINE IS TO BE REMOVED, MINIMUM LANE WIDTHS OF 12' SHALL BE PROVIDED.  
PROVIDE TEMPORARY PAVING AS REQUIRED TO MAINTAIN EFFECTIVE LANE WIDTH.

二二

OF 11

**MEDIA BOROUGH**  
**301 N. JACKSON STREET**  
**MEDIA BOROUGH, DELAWARE COUNTY**

REV. 7:  
REV. 6:  
REV. 5:  
REV. 4:  
REV. 3:  
REV. 2:  
REV. 1:  
ORIG. D

1006 FIRST AVENUE  
MEDIA BOROUGH, PA 19063

**KMATSON@LIGHTHOUSE-ENGINEERS.COM**

ENGINEERING, LLC

